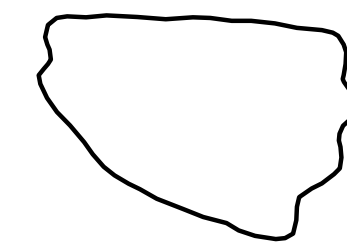
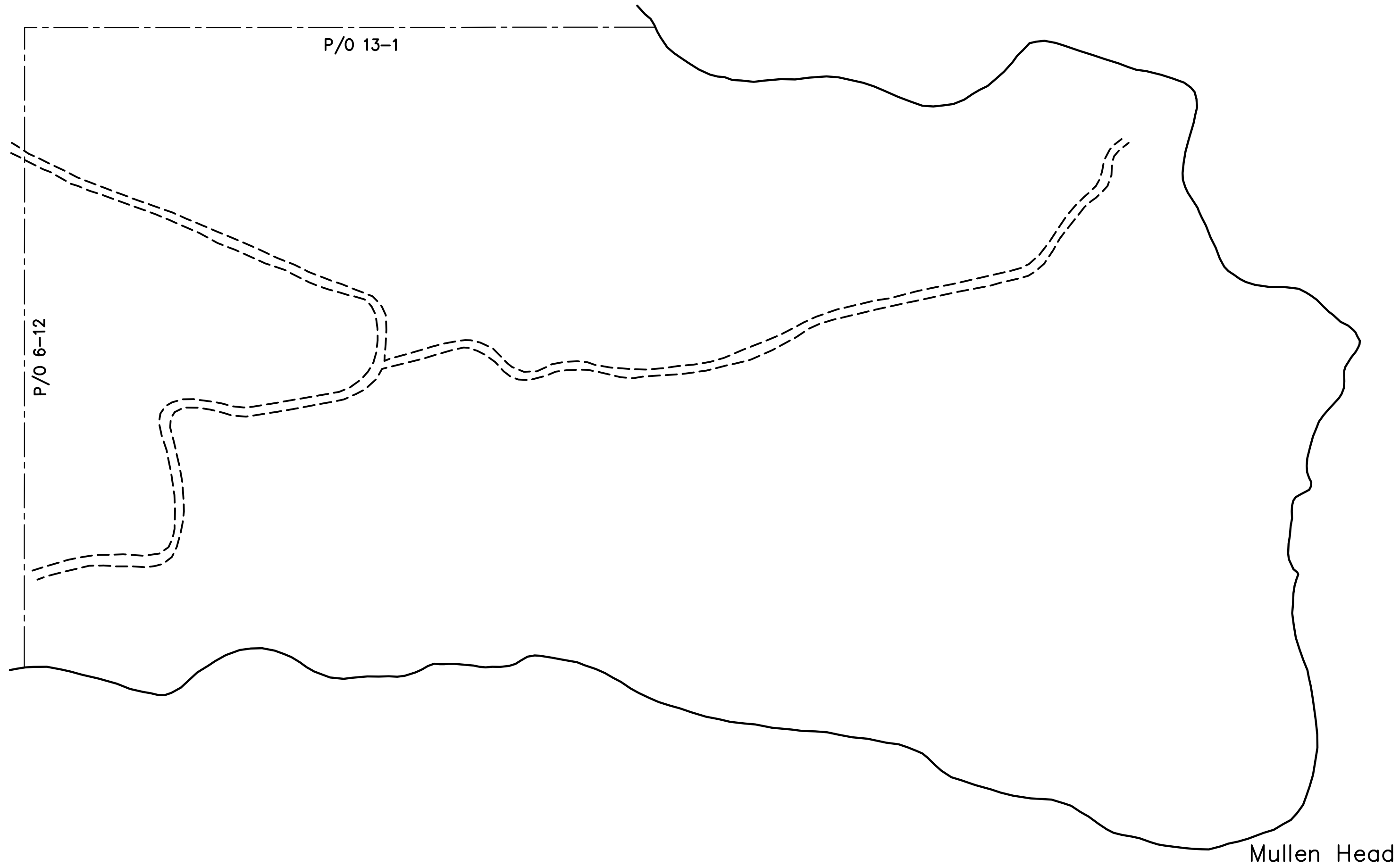


13

P/O 13-1

6

P/O 6-12



PARCEL NUMBERS. . . . . 1  
ADJACENT MAPS. . . . . 2  
MATCH LINE. . . . .

FOR ASSESSMENT PURPOSES ONLY  
NOT TO BE USED FOR CONVEYANCES

REVISED & REPRINTED BY  
**CAI Technologies**  
Precision Mapping. Geospatial Solutions.  
11 PLEASANT STREET, LITTLETON, NH 03561  
800.322.4540 - WWW.CAI-TECH.COM

CURRENT TO: APRIL 1, 2015

PROPERTY MAP  
TOWN OF NORTH HAVEN  
KNOX COUNTY, MAINE  
PREPARED BY  
JAMES W. SEWALL COMPANY OLD TOWN, MAINE  
SCALE : 1" = 200± FEET